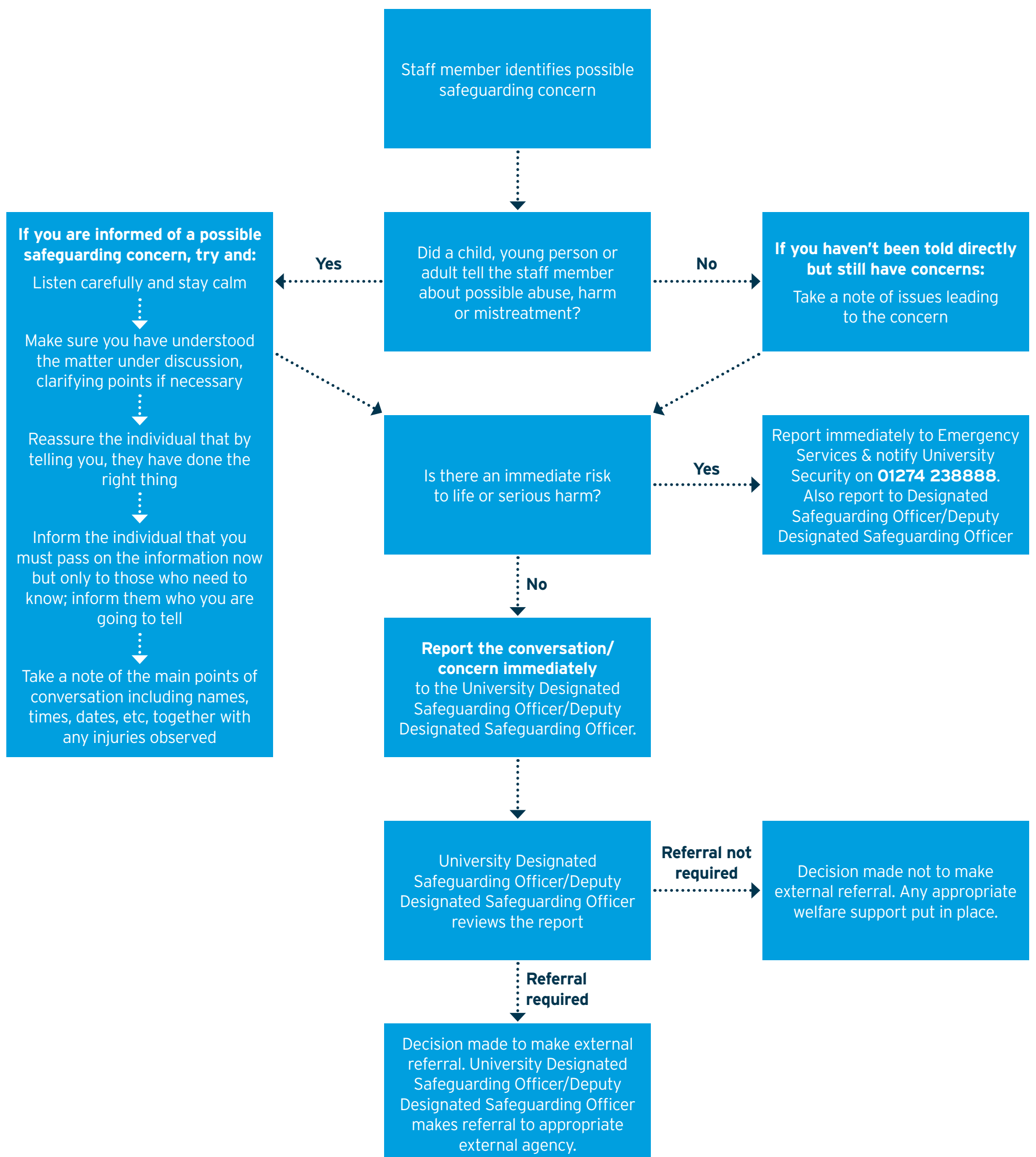


# Flowchart of Procedure for Reporting Safeguarding & Radicalisation Concerns

The following steps should be followed where there are concerns relating to a child, young person or adult at risk:



## Potential Indicators of Safeguarding & Radicalisation Concerns

- A child or adult raises an allegation of current abuse, harm or other inappropriate behaviour.
- A concern is raised that an individual presents a risk of abuse or harm towards a child or adult.
- A student, staff member or visitor discloses information involving themselves or family members which gives rise to concerns that an individual may be harming or abusing a child or adult at risk.
- There are suspicions or indications that a child or adult at risk is being abused or harmed, or is at risk of exploitation, harm or abuse.
- There are observable changes in a child or adult's appearance or behaviour that may be related to exploitation, harm or abuse, including radicalisation.
- Concerns arise that a student or member of staff is vulnerable to radicalisation and there is an identifiable risk of being drawn into terrorism.
- A historic disclosure of sexual or physical abuse is made, where the alleged perpetrator still has access to children or adults at risk